



## CERTIFICATE of ANALYSIS (COA)

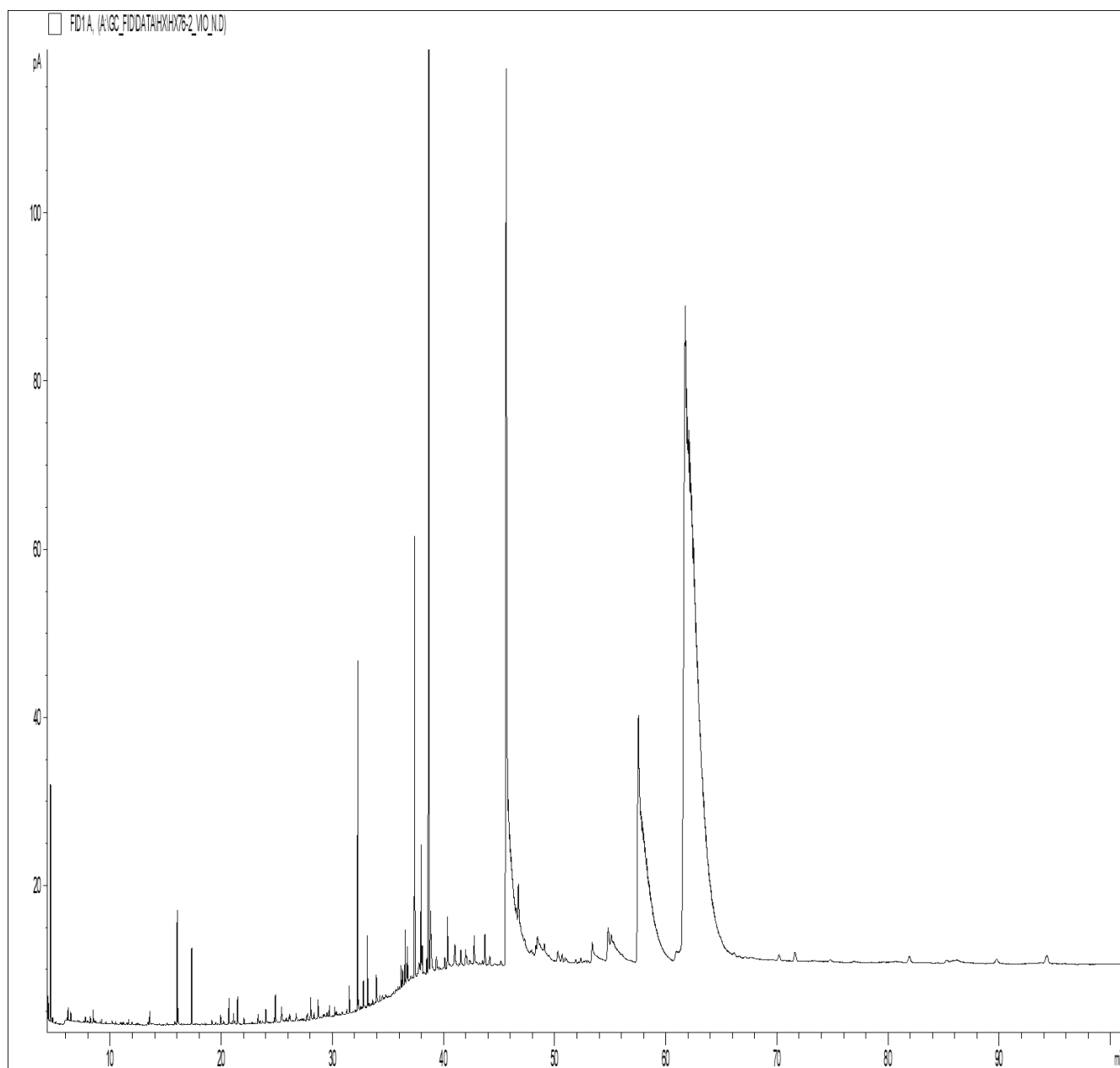
COMMON NAME	Violet Leaf Absolute
LATIN NAME	<i>Viola odorata</i>
COUNTRY OF ORIGIN	Egypt
CULTIVATION METHOD	Conventional
TYPE	Absolute
EXTRACTION METHOD	Solvent Extracted
PLANT PART	Fresh leaves
USE	Natural Perfumery

SKU	1020
LOT #	18
MANUFACTURED	May 2022
BEST BY DATE	May 2027

	SPECIFICATIONS (Range)	
SPECIFIC GRAVITY @20°C	0.91 – 0.94	0.931
REFRACTIVE INDEX @20°C	1.47 – 1.5	1.4794
OPTICAL ROTATION @20°C	<i>na</i>	<i>na</i>

PHYSICAL APPEARANCE	Viscous, semi-solid at room temperature.	<i>Conforms</i>
COLOR	Dark green	<i>Conforms</i>
ODOR	Intense, green leafy, with soft earthy/woody/grassy notes.	<i>Conforms</i>
SOLUBILITY	Soluble in alcohol and fixed oil	
SPECIAL USE INSTRUCTIONS	Dilute before use	

Chromatographic profile:



**Identification results: VIOLET - BATCH N° 1020 LOT 18**

Peaks	RT (min)	Compound name	%	Norm (%)	Allergens (%)
1	4.43	ETHYL FORMATE	0.05		
2	4.64	ETHANOL	0.46		
3	6.22	ALIPHATIC ALCOHOL	0.03		
4	6.46	ALIPHATIC ALCOHOL	0.02		
5	7.78	3-HEXANOL	0.01		
6	8.23	2-HEXANOL	0.02		
7	8.48	ALIPHATIC ALCOHOL	0.03		
8	10.16	p-CYMENE	0.01		
9	11.66	FURANIC COMPOUND	0.01		
10	11.96	3-HEXEN-1-OL ACETATE	0.01		
11	13.55	1-OCTEN-3-OL	0.04		
12	15.14	ALIPHATIC COMPOUND	0.01		
13	15.81	BENZALDEHYDE	0.01		
14	16.03	LINALOOL	0.26		0.26
15	16.11	Z-2-DECENAL	0.04		
16	17.33	2,6-NONADIENAL	0.20		
17	19.14	alpha-TERPINEOL	0.02		
18	19.94	NONENOL ISOMER	0.03		
19	20.68	BENZYL ACETATE	0.07		
20	21.09	ALIPHATIC COMPOUND	0.04		
21	21.46	ALIPHATIC ALCOHOL	0.09		
22	22.03	METHYL SALICYLATE	0.02		
23	23.32	CAPROIC ACID	0.02		
24	23.33	ALIPHATIC ESTER	0.01		
25	24.01	BENZYL ALCOHOL	0.06		0.06
26	24.77	TERPENIC COMPOUND	0.01		
27	24.87	PHENYLETHYL ALCOHOL	0.11		
28	25.42	ALIPHATIC ESTER	0.09		
29	25.80	beta-IONONE	0.01		
30	25.89	cis-JASMONE	0.01		
31	26.09	ALIPHATIC ESTER	0.01		
32	26.17	2-HEXENOIC ACID	0.03		
33	26.73	AROMATIC COMPOUND	0.03		
34	27.70	ETHYL MYRISTATE	0.02		
35	27.76	AROMATIC COMPOUND	0.02		
36	28.05	LACTONE COMPOUND	0.05		
37	28.06	CAPRYLIC ACID	0.03		
38	28.35	AROMATIC COMPOUND	0.02		
39	28.71	METHYL, N-METHYL-ANTHRANILATE	0.06		
40	28.74	ALIPHATIC ALCOHOL	0.03		
41	29.20	ALIPHATIC ESTER	0.01		
42	29.27	HENEICOSANE	0.02		
43	29.52	ALIPHATIC ESTER	0.02		
44	29.73	PENTADECANONE, TRIMETHYL-	0.04		
45	30.21	ALIPHATIC ESTER	0.03		
46	30.36	AROMATIC COMPOUND	0.02		
47	30.89	4-VINYL-GUAIACOL	0.01		
48	31.30	ALIPHATIC ESTER	0.02		
49	31.53	METHYL PALMITATE	0.08		
50	32.29	ETHYL PALMITATE	0.96		
51	32.36	CAPRIC ACID	0.03		

**Identification results: VIOLET - BATCH N° 1020 LOT 18**

Peaks	RT (min)	Compound name	%	Norm (%)	Allergens (%)
52	32.79	ALIPHATIC COMPOUND	0.08		
53	33.16	ALIPHATIC ESTER	0.20		
54	33.31	ALIPHATIC ESTER Mw=298	0.02		
55	33.62	ALIPHATIC ESTER Mw=298	0.02		
56	33.97	ALIPHATIC COMPOUND	0.12		
57	34.26	ETHYL HEXADECENOATE ISOMER	0.02		
58	34.53	SESQUITERPENIC OXIDE	0.03		
59	34.80	SESQUITERPENIC OXIDE	0.02		
60	35.51	SESQUITERPENIC OXIDE	0.01		
61	35.91	ALIPHATIC ESTER	0.02		
62	36.17	ETHYL STEARATE	0.06		
63	36.32	LAURIC ACID	0.06		
64	36.54	ETHYL OLEATE	0.15		
65	36.69	ETHYL OLEATE ISOMER	0.06		
66	36.77	METHYL LINOLEATE	0.10		
67	37.41	ETHYL LINOLEATE	1.30		
68	37.45	AROMATIC COMPOUND	0.02		
69	37.82	AROMATIC COMPOUND	0.10		
70	37.98	METHYL LINOLENATE	0.40		
71	38.09	AROMATIC COMPOUND Mw=208	0.12		
72	38.27	AROMATIC COMPOUND	0.01		
73	38.50	ETHYLIC ESTER	0.06		
74	38.69	<b>ETHYL LINOLENATE</b>	<b>5.46</b>		
75	38.84	PHYTOL	0.37		
76	39.35	KETONE COMPOUND	0.06		
77	39.40	ISOPROPYL LINOLEATE	0.02		
78	40.12	AROMATIC COMPOUND	0.05		
79	40.36	MYRISTIC ACID	0.25		
80	40.56	ALIPHATIC ESTER	0.02		
81	41.03	CHRYSANTHEMIC COMPOUND	0.09		
82	41.56	ALIPHATIC ALCOHOL	0.09		
83	41.99	ALIPHATIC ALCOHOL	0.07		
84	42.07	COMPOUND Mw=242	0.05		
85	42.76	PENTADECANOIC ACID	0.12		
86	43.73	ETHYLIC ESTER	0.17		
87	44.17	ETHYLIC ESTER	0.07		
88	45.18	ALIPHATIC ESTER	0.04		
89	45.64	<b>PALMITIC ACID</b>	<b>15.50</b>		
90	46.75	PALMITOLEIC ACID	0.22		
91	48.31	ETHYLIC ESTER	0.03		
92	48.45	ALIPHATIC COMPOUND	0.10		
93	49.07	ALKENE COMPOUND Mw=270	0.04		
94	50.31	ALIPHATIC COMPOUND Mw=360	0.09		
95	50.70	AROMATIC ALCOHOL	0.06		
96	50.96	KETONE COMPOUND	0.03		
97	52.37	ALIPHATIC ALCOHOL	0.04		
98	52.79	ETHYLIC ESTER	0.03		
99	53.00	KETONE COMPOUND	0.02		
100	53.39	STEARIC ACID	0.48		
101	54.81	OLEIC ACID	1.63		
102	57.55	<b>LINOLEIC ACID</b>	<b>12.70</b>		

<b>Identification results: VIOLET - BATCH N° 1020 LOT 18</b>					
<b>Peaks</b>	<b>RT (min)</b>	<b>Compound name</b>	<b>%</b>	<b>Norm (%)</b>	<b>Allergens (%)</b>
103	61.32	AROMATIC COMPOUND	0.23		
104	61.75	<b>LINOLENIC ACID</b>	<b>54.94</b>		
105	70.19	ALIPHATIC ESTER	0.07		
106	71.64	AROMATIC COMPOUND	0.11		
107	81.91	PHENYLMETHYL LINOLENATE	0.10		
108	89.77	AROMATIC COMPOUND	0.07		
109	94.29	AROMATIC COMPOUND	0.14		
		<b>TOTAL</b>	<b>99.83</b>		<b>0.32</b>

This Absolute is a 100% pure and natural product and it does not contain any artificial ingredients or adulteration of any kind to the best of our knowledge. The analysis and statements herein constitute the most complete information available to Eden Botanicals. This product is guaranteed by Eden Botanicals to be of excellent quality.

Eden Botanicals

[www.edenbotanicals.com](http://www.edenbotanicals.com)

info@edenbotanicals.com

T: 1-707-509-0041 / F: 1-707-949-2526

Document created: 02.18.19

Document updated: 08.09.22