



CERTIFICATE of ANALYSIS (COA)

COMMON NAME	Fir, Balsam Absolute
LATIN NAME	<i>Abies balsamea</i>
COUNTRY OF ORIGIN	Canada
CULTIVATION METHOD	Wild Grown
TYPE	Absolute
EXTRACTION METHOD	Solvent Extracted
PLANT PART	Needles
USE	Natural Perfumery

SKU	325
LOT #	21
MANUFACTURING DATE	October 2023
BEST BY DATE	October 2028

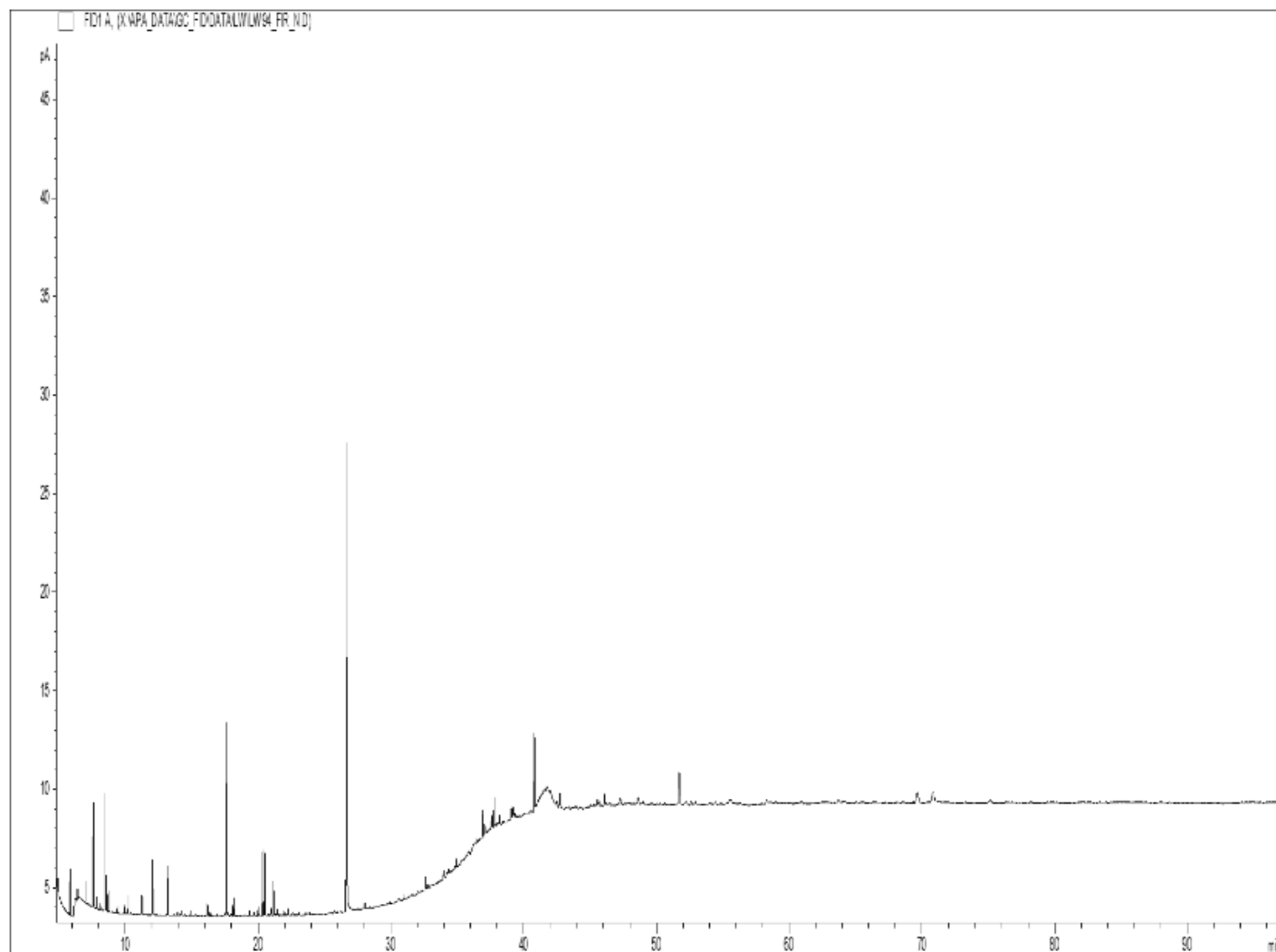
	SPECIFICATIONS (Range)	
SPECIFIC GRAVITY @20°C	<i>na</i>	<i>na</i>
REFRACTIVE INDEX @20°C	<i>na</i>	<i>na</i>
OPTICAL ROTATION @20°C	<i>na</i>	<i>na</i>

PHYSICAL APPEARANCE	Thick resinous substance, solid at room temperature.	<i>Conforms</i>
COLOR	Dark brown	<i>Conforms</i>
ODOR	Sweet, fresh, fruity and balsamic.	<i>Conforms</i>
SOLUBILITY	Soluble in alcohol and fixed oils	
SPECIAL USE INSTRUCTIONS	Dilute before use. This product will require intense heating to liquefy.	

PRIMARY CONSTITUENTS	Bornyl Acetate, Abienol.
----------------------	--------------------------

THIRD PARTY LAB ANALYSIS (GCMS)

CHROMATOGRAPHIC PROFILE:



RESULTS TABLE

- FIR, BALSAM ABS - REF. 325 LOT 21 -

Peaks	RT (min)	Compound name	%	Standard (%)	Allergens (%)
1	4.91	ETHANOL	0.33		
2	5.85	alpha-PINENE	1.04		1.04
3	6.40	CAMPHERE	0.56		
4	6.98	beta-PINENE	0.54		0.54
5	7.60	delta3-CARENE	2.70		
6	7.67	beta-MYRCENE	0.10		
7	7.87	alpha-PHELLANDRENE	0.30		
8	8.13	alpha-TERPINENE	0.19		0.19
9	8.50	LIMONENE	3.13		3.13
10	8.73	beta-PHELLANDRENE	0.61		
11	9.41	gamma-TERPINENE	0.19		
12	9.95	p-CYMENE	0.26		
13	10.23	TERPINOLENE	0.52		0.52
14	11.27	COMPOUND Mw=172	0.58		
15	13.19	COMPOUND Mw=172	1.58		
16	13.95	alpha,p-DIMETHYLSTYRENE	0.14		
17	14.22	TERPENIC COMPOUND Mw=136	0.13		
18	14.97	alpha-LONGIPINENE	0.15		
19	16.19	CAMPHOR	0.45		0.45
20	16.39	PINOCAMPHONE	0.10		
21	17.50	PINOCARVONE	0.10		
22	17.58	LONGIFOLENE	0.55		
23	17.62	BORNYL ACETATE	6.06		
24	17.72	alpha-trans-BERGAMOTENE	0.17		
25	18.07	TERPINENE-4-OL	0.36		
26	18.21	beta-CARYOPHYLLENE	0.58		0.58
27	19.39	trans-PINOCARVEOL	0.23		
28	19.69	DIETHYL SUCCINATE	0.15		
29	20.02	alpha-HUMULENE	0.31		
30	20.34	alpha-TERPINEOL	2.16		2.16
31	20.49	BORNEOL	2.64		
32	20.99	VERBENONE	0.40		
33	21.17	beta-BISABOLENE	1.10		
34	21.44	PIPERITONE	0.36		
35	21.97	delta-CADINENE	0.13		
36	22.26	trans-alpha-BISABOLENE	0.25		
37	22.64	MYRTENOL	0.17		
38	26.64	MALTOL	21.84		
39	28.05	NEROLIDOL	0.19		
40	30.94	THYMOL	0.14		
41	32.05	ALIPHATIC ESTER	0.14		
42	32.62	ETHYL PALMITATE	0.43		
43	32.78	SESQUITERPENIC COMPOUND	0.24		

- FIR, BALSAM ABS - REF. 325 LOT 21 -					
Peaks	RT (min)	Compound name	%	Standard (%)	Allergens (%)
44	33.98	AROMATIC COMPOUND	0.32		
45	34.34	DITERPENE	0.63		
46	34.95	AROMATIC COMPOUND	0.38		
47	36.52	BENZOIC ACID	0.35		
48	36.91	ETHYL OLEATE	1.01		
49	37.07	DITERPENE	0.80		
50	37.61	COMPOUND Mw=290	0.57		
51	37.80	ETHYL LINOLEATE	1.09		
52	38.20	TERPENIC COMPOUND	0.44		
53	39.09	COMPOUND Mw=290	0.45		
54	39.20	METHYL LINOLEATE ISOMER	0.70		
55	39.32	TERPENIC COMPOUND	0.38		
56	40.57	AROMATIC COMPOUND	0.62		
57	40.82	trans-ABIENOL	5.82		
58	41.78	cis-ABIENOL	21.85		
59	42.50	ABIENOL ISOMER	0.93		
60	42.67	AROMATIC COMPOUND	0.59		
61	42.77	SESQUITERPENIC COMPOUND	1.22		
62	45.57	AROMATIC COMPOUND	0.45		
63	45.70	TERPENIC COMPOUND	0.27		
64	46.13	AROMATIC COMPOUND	0.81		
65	47.31	PALMITIC ACID	0.49		
66	48.65	HOMOVANILLIC ACID	0.59		
67	51.73	COMPOUND Mw=286	2.92		
68	52.28	METHYL DEHYDROABIETATE	0.77		
69	69.67	COMPOUND Mw=288	1.62		
70	70.86	AROMATIC COMPOUND Mw=286	1.62		
		TOTAL	100.00		8.60

This Absolute is a 100% pure and natural product. It does not contain any artificial ingredients or adulteration of any kind to the best of our knowledge. The analysis and statements herein constitute the most complete information available to Eden Botanicals. This product is guaranteed by Eden Botanicals to be of excellent quality.

Eden Botanicals
www.edenbotanicals.com
info@edenbotanicals.com
T: 1-707-509-0041 / F: 1-707-949-2526
Document created: 11.14.18
Document updated: 03.25.25